



CENTURY CITY
LANDMARK

2121
AVENUE OF
THE STARS



A LANDMARK OPPORTUNITY

Showcase your success in LA's most sought-after business destination: 2121 Avenue of the Stars, an iconic tower with award-winning hospitality in a world-renowned location.

Here, a unique opportunity awaits: the ability to fully customize your suites, including private corner offices, and enjoy unobstructed panoramic views from every floor.



LA'S MOST PRESTIGIOUS WORKPLACE

CONCIERGE HOSPITALITY

Our high-touch, personalized service, recognized with BOMA's prestigious The Outstanding Building of the Year (TOBY®) Award, aligns with your brand's uncompromising standards.

OUR PARTNERSHIP, YOUR ADVANTAGE

As a privately-held, financially-stable long-term owner, we do what others in Century City can't — empower your success every step of the way.

THE NEW CETNER OF BUSINESS IN LA

Be at a statement-making address in LA's most coveted business district alongside industry-leading legal, finance and entertainment companies.



MARKET-EXCLUSIVE MEETINGS & EVENTS

Inspire teams at the hospitality-level Venue Meetings & Events with a fully equipped conference center and lounge.

SPACIOUS PRE-FUNCTION LOUNGE

EXECUTIVE BOARDROOM, SEATS UP TO 16 PEOPLE

VERSATILE MULTI-PURPOSE ROOM

Lounge layout, seats up to 45 people

Training layout, seats up to 46 people

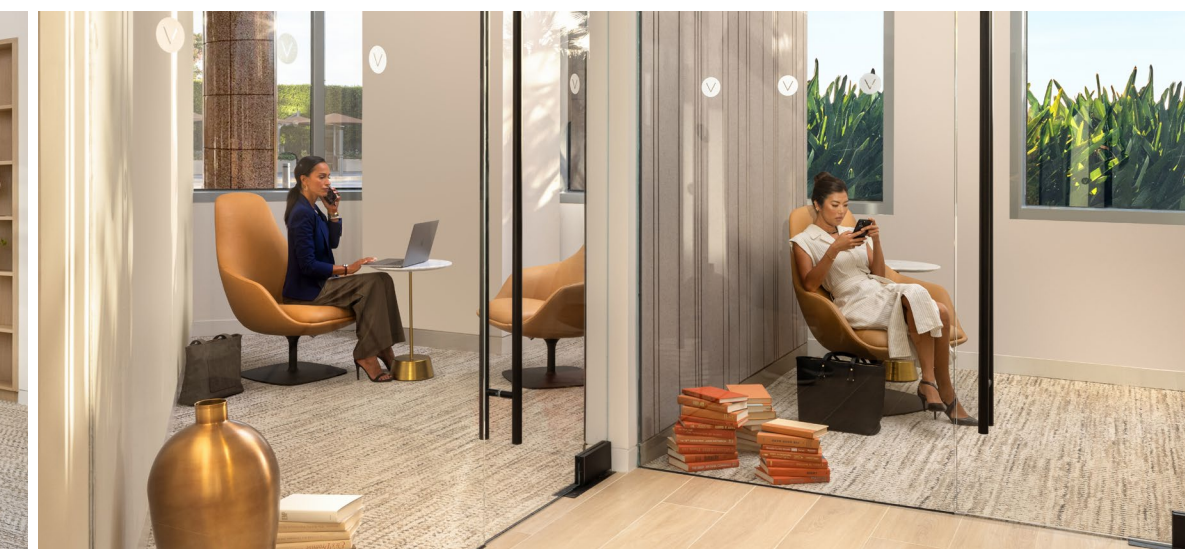
Lecture layout, seats up to 90 people

PLUG-AND-PLAY TECHNOLOGY

CATERING SPACE

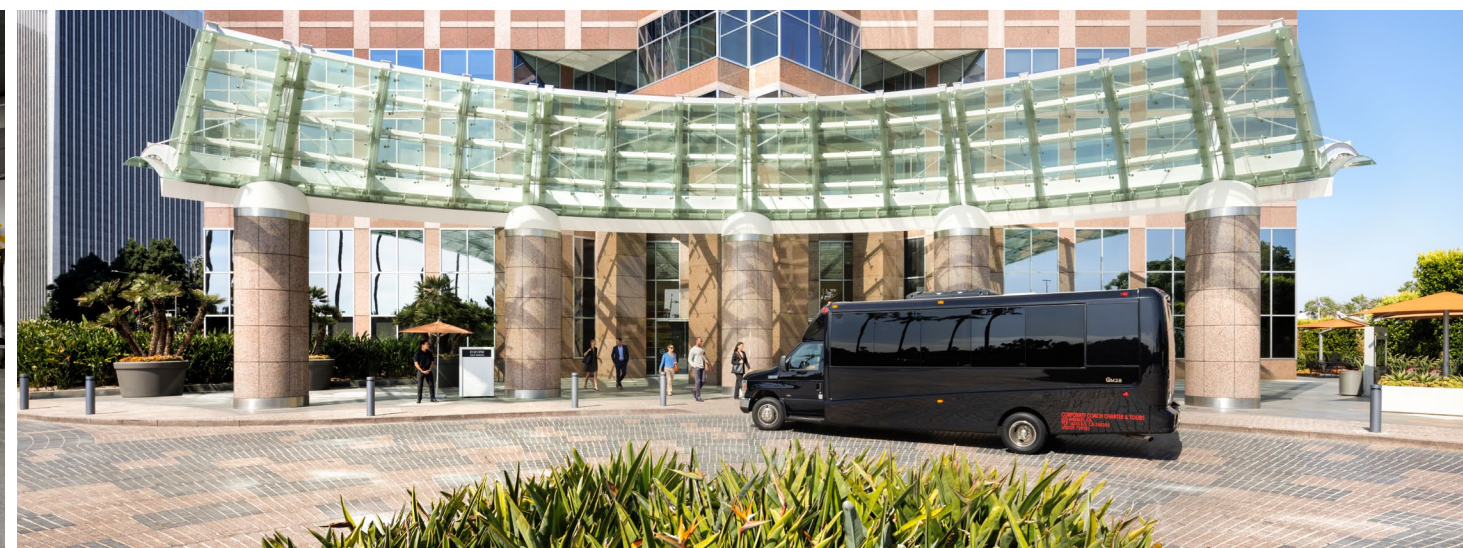
6

All properties are offered for lease through Irvine Management Company, a licensed real estate broker DRE LIC. #02041810





Rendering is an artist's conception and may differ from the final space.



ENGAGING AMENITIES

Destination-worthy spaces for work, play and wellness.

COURTESY SHUTTLE SERVICE

Minutes from 200+ high-end dining and retail at Westfield Century City via complimentary shuttle.

CHAUMONT

Enjoy freshly made sweet and savory pastries, coffee drinks and French-inspired dishes for breakfast and lunch.

KINETIC FITNESS

Peloton bikes, modern strength & cardio equipment, yoga studio and towel service.

THE COMMONS OUTDOOR WORKSPACE

Two expansive work-ready outdoor gathering and collaboration areas.

CENTURY CITY LANDMARK

BE IN A LOCATION TALENT LOVES

Enjoy easy access to Olympic Boulevard and I-405 for seamless connection to Westfield Century City, downtown LA, Santa Monica coast, San Fernando Valley and South Bay cities.





DISTINGUISHED ADDRESS

ICONIC ARCHITECTURE

The last building designed by celebrated architect William L. Pereira features an elegant red granite and glass exterior and a two-story, barrel-vaulted lobby.

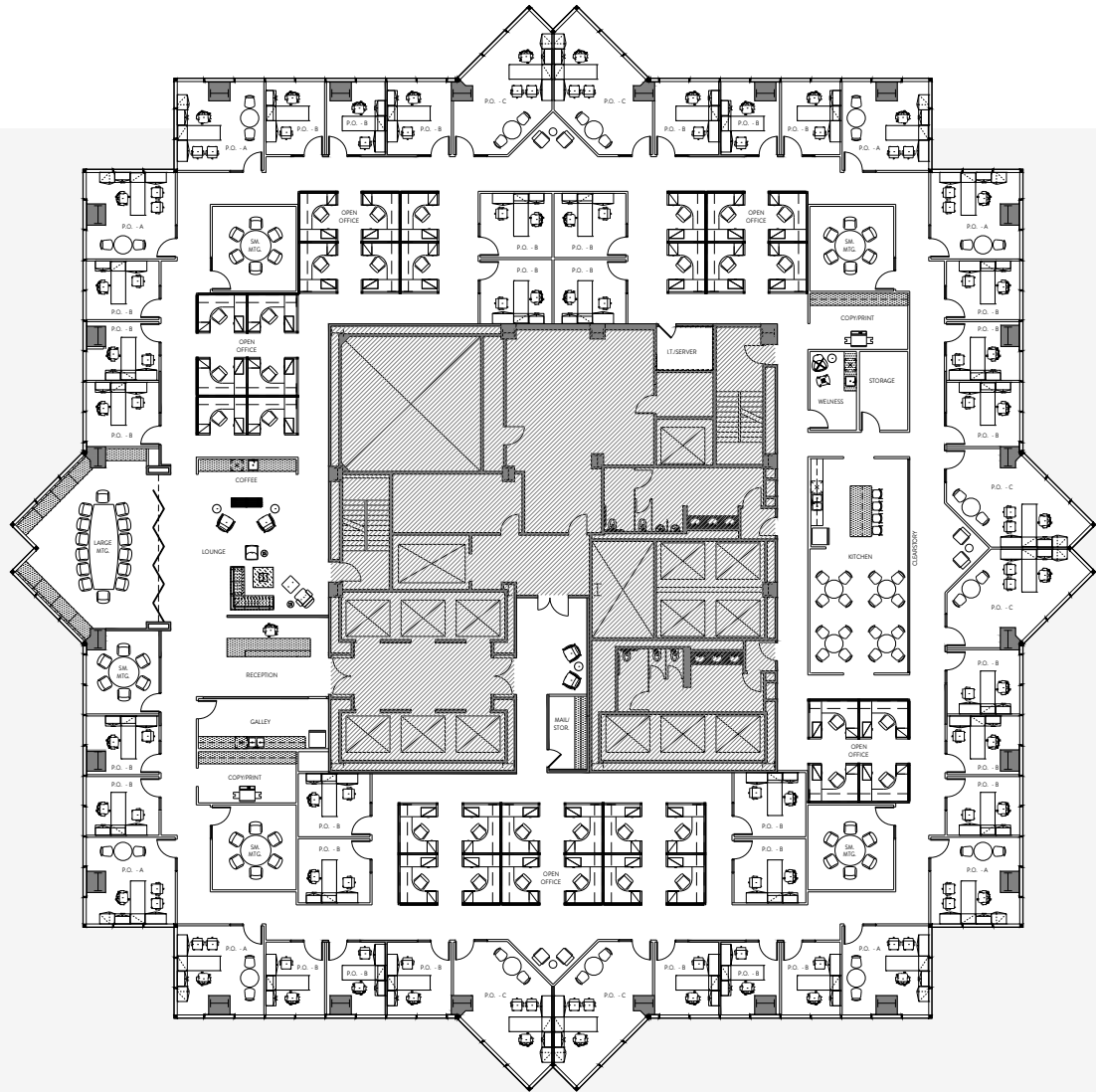
IN GOOD COMPANY

Join prominent companies including AEW Capital Management, Armanino, Artists First, Evoke Advisors, Gursev Schneider, Katten, Miller Barondess and Stifel Nicolaus.

HYPOTHETICAL FLOOR PLAN

TRADITIONAL

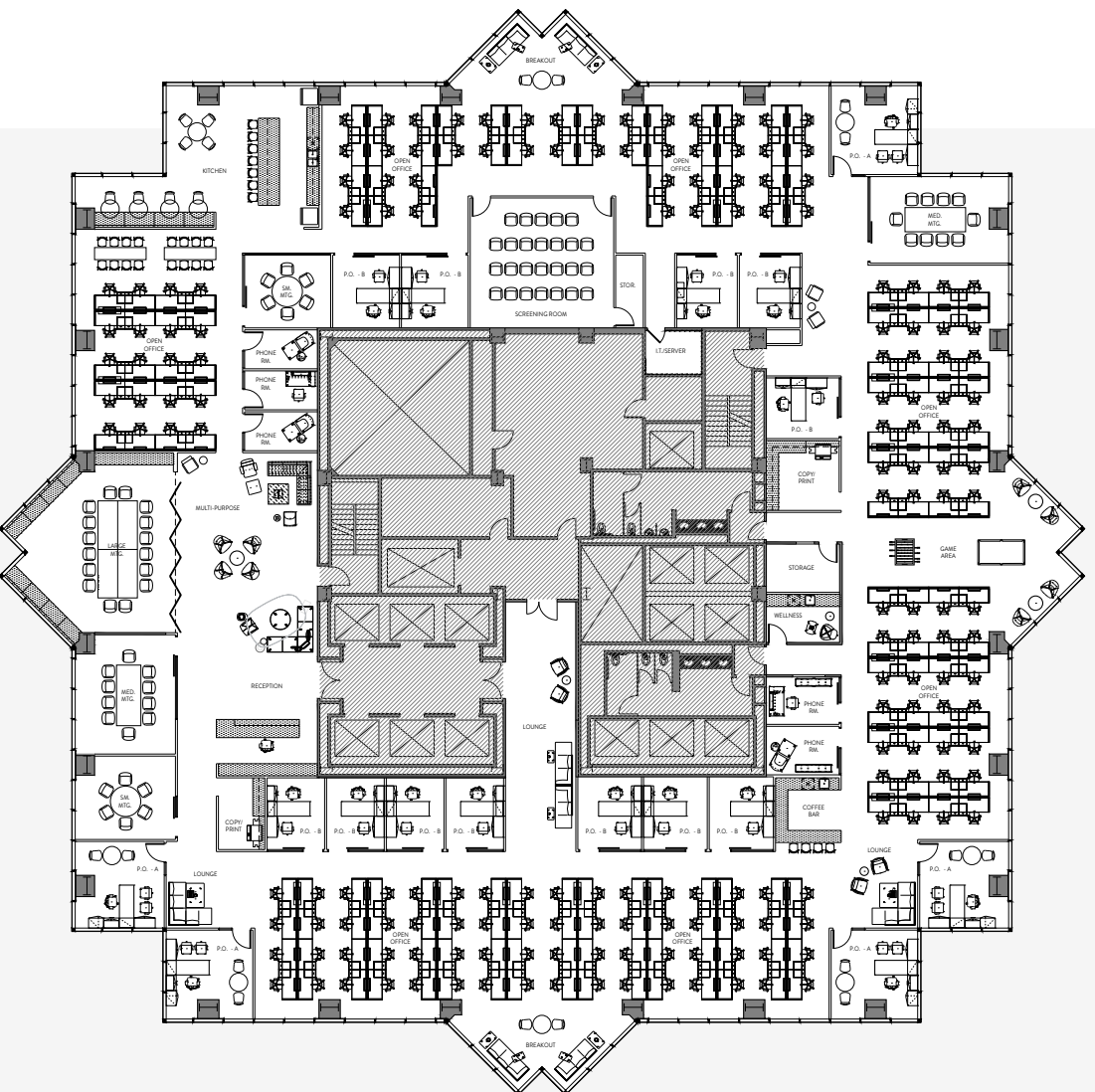
- 46 OFFICE SPACES
- 35 WORK STATIONS
- 6 CONFERENCE ROOMS
- 2 COLLABORATION SPACES



HYPOTHETICAL FLOOR PLAN

CREATIVE

- 17 OFFICE SPACES
- 92 WORK STATIONS
- 5 CONFERENCE ROOMS
- 12 COLLABORATION SPACES





BRING YOUR COMPANY CULTURE TO LIFE

CUSTOMER SPACES

Completely customize your workspace to empower your team to excel and take bold, strategic action. Our expert teams will help you create a space that's uniquely your own, reflecting your brand and culture.





MOVE-IN READY WORKSPACES

Flex+ offers small businesses premium, move-in ready suites in the best locations — plus no upfront investment or long-term commitment.



PREMIUM WORKSPACE

Build your brand in expertly designed suites with high-end finishes and furniture options.



MOVE-IN READY

Save on startup costs with no upfront investment, build-outs or long lead times.



FLEXIBLE LEASE TERMS

Choose terms that work for you with no long-term commitment and scale across our 150+ workplaces.



PERSONALIZED SUPPORT

Make everything easier with simplified leasing and attentive customer care every step of the way.

get started at flexplus.com



WE CREATE SPACES THAT BRING PEOPLE TOGETHER TO SUCCEED

More than 18 million people choose to live, work, shop, stay and play in Irvine Company's 129 million SF real estate portfolio. Decades of thoughtful planning and stewardship ensure we deliver exceptional placemaking and customer experiences — all backed by our commitment to long-term ownership and industry-leading financial stability.

INDUSTRY-LEADING FINANCIAL STABILITY

Our unmatched capital resources ensure we uphold our standards of excellence, regardless of market conditions.

FUTURE-PROOF FLEXIBILITY

A range of lease options and our collaborative partnership support your growth.

ELEVATED CUSTOMER CARE

Expert teams, fast response times and personalized service ensure worry-free workdays.

READY FOR WHAT'S NEXT

From enabling hybrid solutions to supporting diverse work styles, we keep your business at the forefront of what's possible.

ACTIVATED TO ATTRACT & ENGAGE TEAMS

Experience-driven amenities make your workplace an essential employee destination.

SUSTAINABILITY BY DESIGN

We strive to lead and innovate for the preservation of environmental resources.





FOR LEASING INFORMATION



RICK BUCKLEY | *Principal*
rbuckley@larealtypartners.com
310.890.7050 | CA Lic: #01051873

OWNED AND MANAGED BY

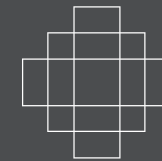


SCOTT DIGGS | *Regional Vice President, Leasing*
sdiggs@irvinecompany.com
858.658.7743 | CA Lic: #01368593

KURT DAVIS | *Director, Leasing*
kudavis@irvinecompany.com
310.405.8968 | CA Lic: #10886608

VICTORIA STRUEMPH | *Manager, Leasing*
vstruemp@irvinecompany.com
310.405.8972 | CA Lic: #02163190

2121AOS.COM



2121
AVENUE OF
THE STARS

CENTURY CITY

©2026 Irvine Management Company. All rights reserved. All properties are offered for lease through Irvine Management Company, a licensed real estate broker DRE LIC.#02041810. All renderings/pictures shown are for information and illustration purposes only and are subject to change. Products, features, and amenities subject to availability. While we believe this information to be reliable, Irvine Management Company makes no representation or warranty as to the accuracy or completeness of such data and it should be independently verified by prospective tenants. You should conduct a careful, independent investigation of the property and verify all information. The Irvine Company, the Sunwave logo and Flex+ are registered trademarks of Irvine Management Company. Trademarks are the property of their respective owners.

