

IRVINE TOWERS®

18100-18500 VON KARMAN AVE.
IRVINE, CALIFORNIA



 IRVINE COMPANY



OVERVIEW



work with
all the works

→ Experience a dynamic workplace where teams work best in the Airport Area – with flexible office suites, premium on-site amenities, energized outdoor workspaces and an engaging surrounding community powering the workday.



in the heart
of the airport area

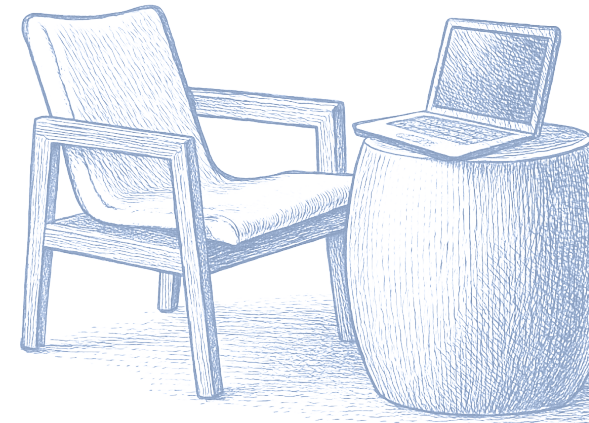
→ A premier location in the Airport Area with prime visibility and quick access to everything. Direct connections to the 73 Toll Road and 405 & 55 freeways streamline commutes, with John Wayne Airport just minutes away.

the ideal
place to be

→ Surrounded by every amenity – from dining options such as Bosscat Kitchen and Trade Food Hall to resort-style apartments, hotels and high-end health & wellness clubs including Life Time and Equinox – teams can stay focused and refreshed.

a place to connect –
and disconnect

→ Power the workday with coffee, breakfast and lunch at Tru Bru, elevated dining at Benny & Mary's, expansive outdoor workspaces, Kinetic Fitness and the on-site Marriott for entertaining and hosting guests.





Mechanics Bank

bakertilly

First American Title

ORANGE COUNTY BUSINESS JOURNAL

AMENITIES

on-site amenities, *seamless workdays*

→ Bring out the best in every team with helpful services like auto detailing, complimentary airport shuttles, dry cleaning and secure on-site storage solutions.



Tru Bru, Benny and Mary's



Kinetic Fitness



The Commons outdoor workspace



Venue Meetings & Events











IRVINE TOWERS

LOCATION

irvine towers
area map

➔ Resort-style living is just steps away, with a wide variety of nearby retail and dining options. Easily host guests or gather for meetings in nearby hotels and flexible venues.

					
15	20	19	17	108	88
APARTMENT COMMUNITIES	ENTERTAINMENT VENUES	FITNESS CENTERS	HOTELS	RESTAURANTS	RETAIL SHOPS

WITHIN A 5-MILE RADIUS

move-in ready *workspaces*

→ Flex+ gives small businesses premium, move-in ready suites in the best locations — plus no upfront investment or long-term commitment.



premium workspace

Build your brand in expertly designed suites with high-end finishes and furniture options.



move-in ready

Save on startup costs with no upfront investment, build-outs or long lead times.



flexible lease terms

Choose terms that work for you with no long-term commitment and scale across our 150+ workplaces.



personalized support

Make everything easier with simplified leasing and attentive customer care every step of the way.

get started at flexplus.com



we create places that *bring people together to succeed*

➔ More than 18 million people choose to live, work, shop, stay and play in Irvine Company's 129M SF real estate portfolio. Decades of thoughtful planning and stewardship ensure we deliver exceptional placemaking and customer experiences – all backed by our commitment to long-term ownership and industry-leading financial stability.

industry-leading financial stability

Our unmatched capital resources ensure we uphold our standards of excellence, regardless of market conditions.

future-proof flexibility

A range of lease options and our collaborative partnership support your growth.

elevated customer care

Expert teams, fast response times and personalized service ensure worry-free workdays.

ready for what's next

From enabling hybrid solutions to supporting diverse work styles, we keep your business at the forefront of what's possible.

activated to attract & engage teams

Experience-driven amenities make your workplace an essential employee destination.

sustainability by design

We strive to lead and innovate for the preservation of environmental resources.



