

/ Inspire. Productivity. /



## 29 Parker

*59,199 SF*

*Flex Corporate Headquarters*

Orange County - Irvine Spectrum



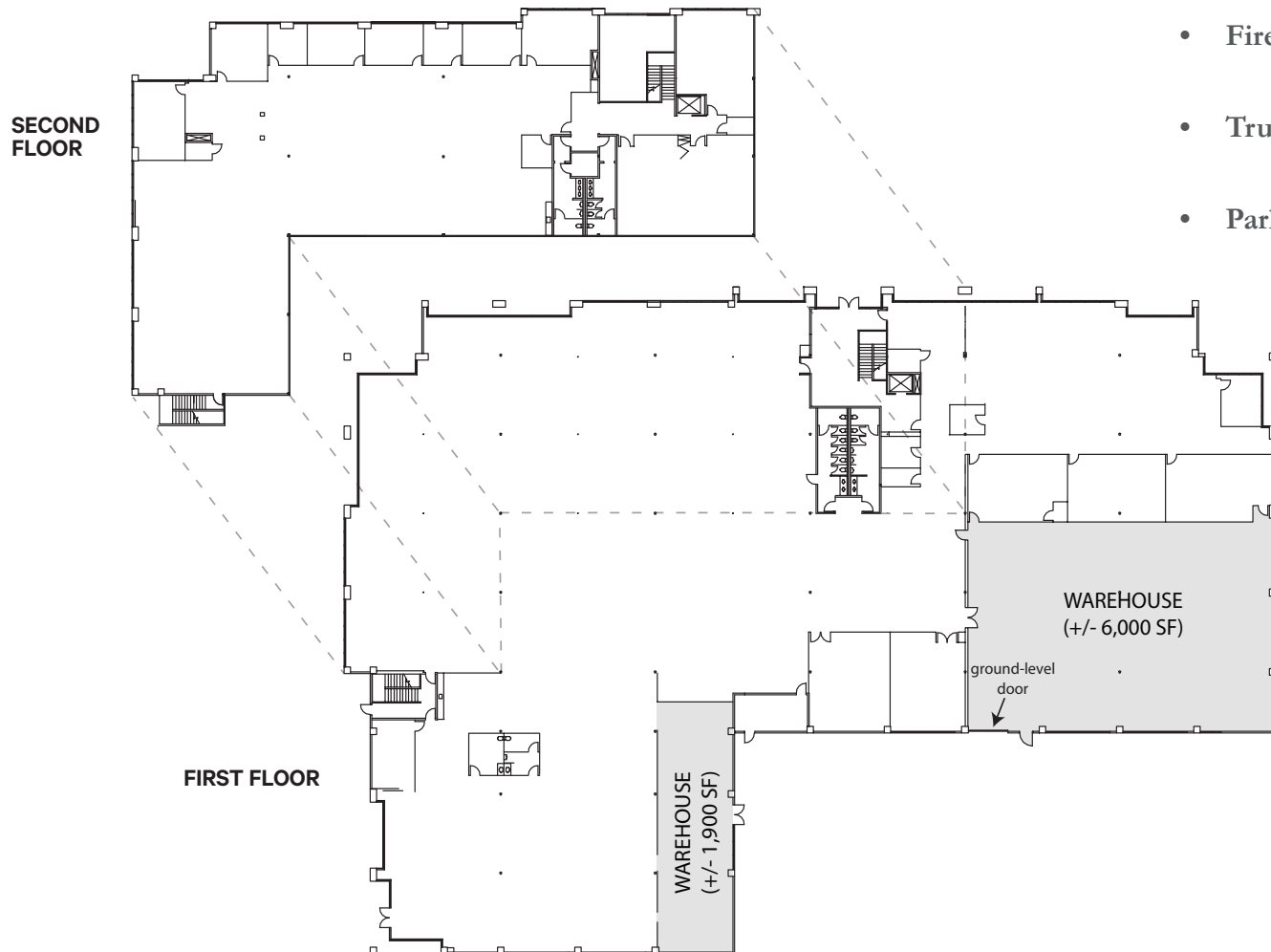
**IRVINE COMPANY**  
**OFFICE PROPERTIES**

# / Floor Plan /

59,199 SF Opportunity in Irvine Spectrum®

## Building Features

- **First Floor:**  
Office: 36,342 sq. ft.  
Warehouse: 7,900 sq. ft.
- **Second Floor**  
Office: 14,957 sq. ft.
- **Electrical:**  
2,000 AMPS, 277/480 volts
- **Warehouse Clearance:**  
+/- 26'
- **Fire Sprinklers:**  
.30 GPM/2,000 SF
- **Truck Loading:**  
One (1) 12"x14' ground-level door
- **Parking:**  
4:1,000



# / 29 Parker /

- » Flexible 59,199 sq. ft. corporate headquarters suitable for office R&D and 7,900 sq. ft.
- » Abundant 4:1,000 Parking
- » Located in the center of Orange County, Irvine Spectrum®
- » Title-24 compliant
- » Generous glass-line
- » Building-top and monument signage available
- » Convenient food and beverage options at adjacent Pacific Commoncentre
- » Just minutes to Irvine Spectrum Center® featuring more than 30 restaurants and 90 shops
- » Convenient access to the 405, 5, 133 Freeways with ingress/egress via Irvine Blvd.

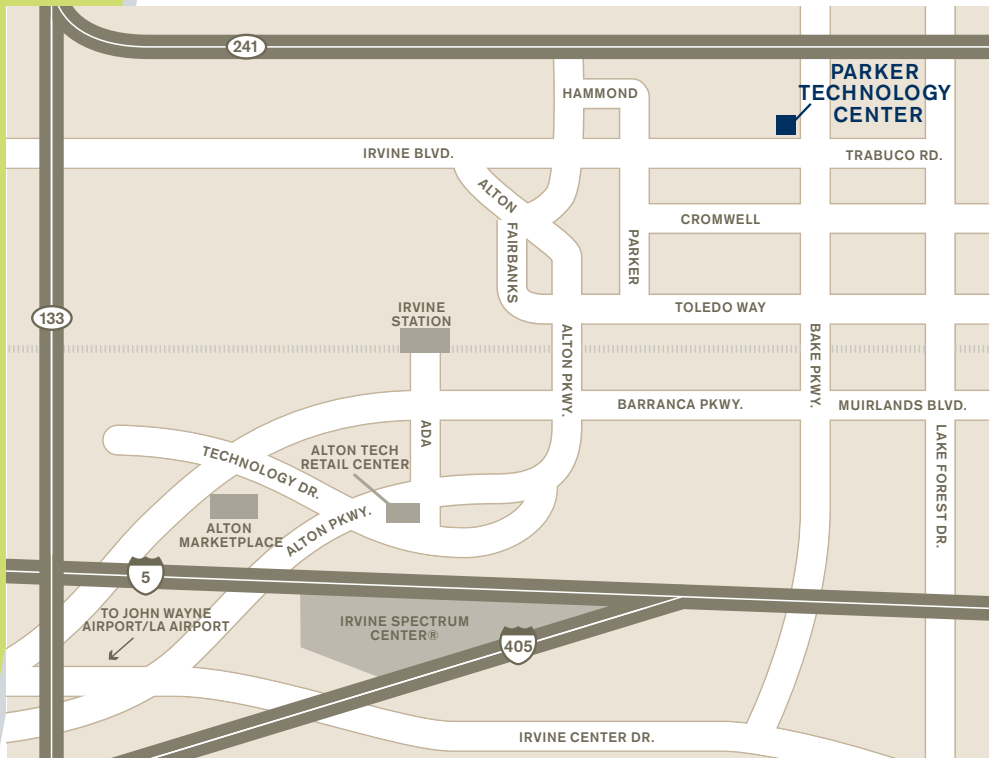


# Parker Technology Center

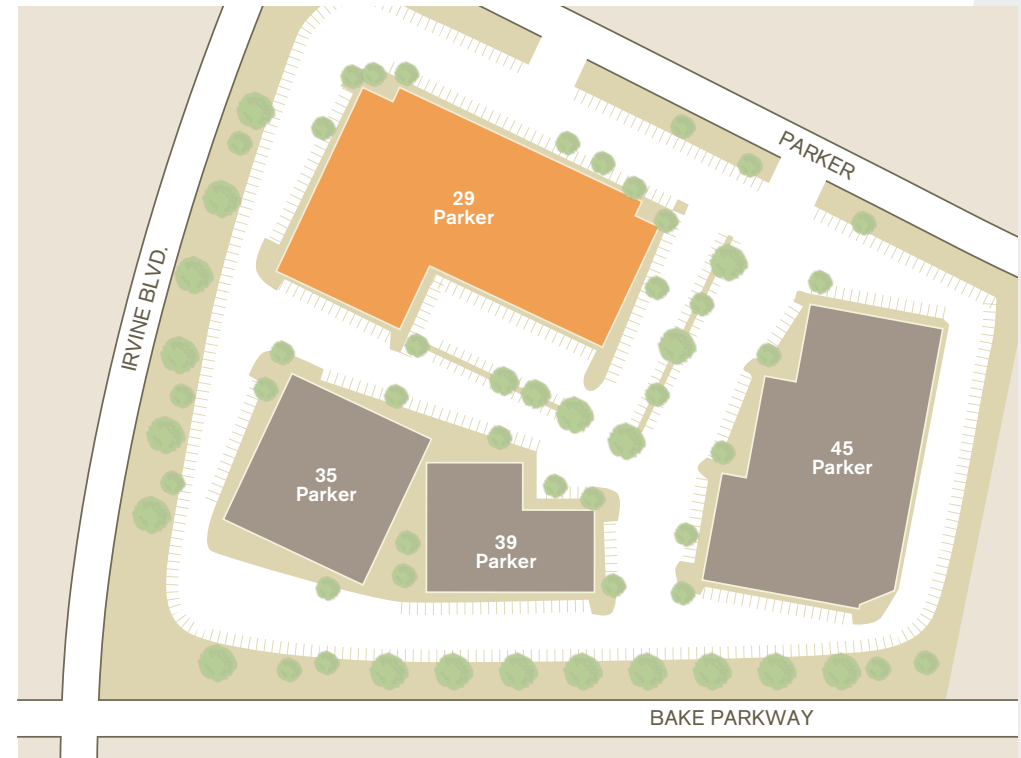
Orange County - Irvine Spectrum

29 Parker, Irvine

/ Area Map /



/ Site Map /



[IrvineCompanyOffice.com](http://IrvineCompanyOffice.com)

For leasing information,  
call Sue Lyle 949.720.2668

111 Innovation, Irvine, CA 92618