

EASTGATE

LA JOLLA UTC





// 4755-4875 EASTGATE MALL | 9515-9890 TOWNE CENTRE DRIVE | SAN DIEGO, CALIFORNIA

OVERVIEW

CENTERED IN LA JOLLA UTC

DESIGNED FOR THE FUTURE OF WORK

Be part of the reimagining of this 26-building campus into a cutting-edge destination for leading innovators with customizable workspaces, engaging amenities and a community of prestigious companies shaping the future of work.



26-building campus,
1.5M SF



Typical floor plate size
16K - 30K SF



GEORGE'S AT THE COVE

"Ours is an ideal location for a growing technology company. It offers high-quality work environments, easy freeway access, outstanding amenities and proximity to the university and nearby technology."

- Mark Drucker, CEO,
Silanna Semiconductor

THE ULTIMATE COASTAL WORKDAY LIFESTYLE

LIVE, WORK, PLAY, LA JOLLA UTC

Experience the dynamic energy of La Jolla UTC with Irvine Company, where the area's world-famous coastal lifestyle draws top talent from San Diego and beyond. Our workplaces are conveniently located near everything your teams need to thrive, including La Jolla UTC's best restaurants, shops and residential communities.



THE POINTE AT WESTFIELD UTC



THE FULLY UPGRADED OUTDOOR WORKSPACE BETWEEN 4770 AND 4790 EASTGATE MALL WILL FEATURE SHADED WORKSPACES IN A VIBRANT SETTING

REINVESTMENT

EXPLORE THE MODERNIZATION

Reimagined outdoor workspaces, cafe, exteriors and entries create an energizing atmosphere, adding to a collection of sought-after amenities like fitness, conferencing and sports courts.



UPGRADED OPEN-AIR CAFE



TRANSFORMED CANYON OVERLOOK



REFRESHED EXTERIORS, ENTRIES

REIMAGINED TO INSPIRE



Updated monument and directional signage throughout the workplace



12 building entry and landscaping improvements



6 upgraded outdoor workspaces

FEATURES

EVERYTHING TEAMS NEED ON SITE

Bring teams together for more productive workdays with sought-after amenities on an engaging campus.



Cafe



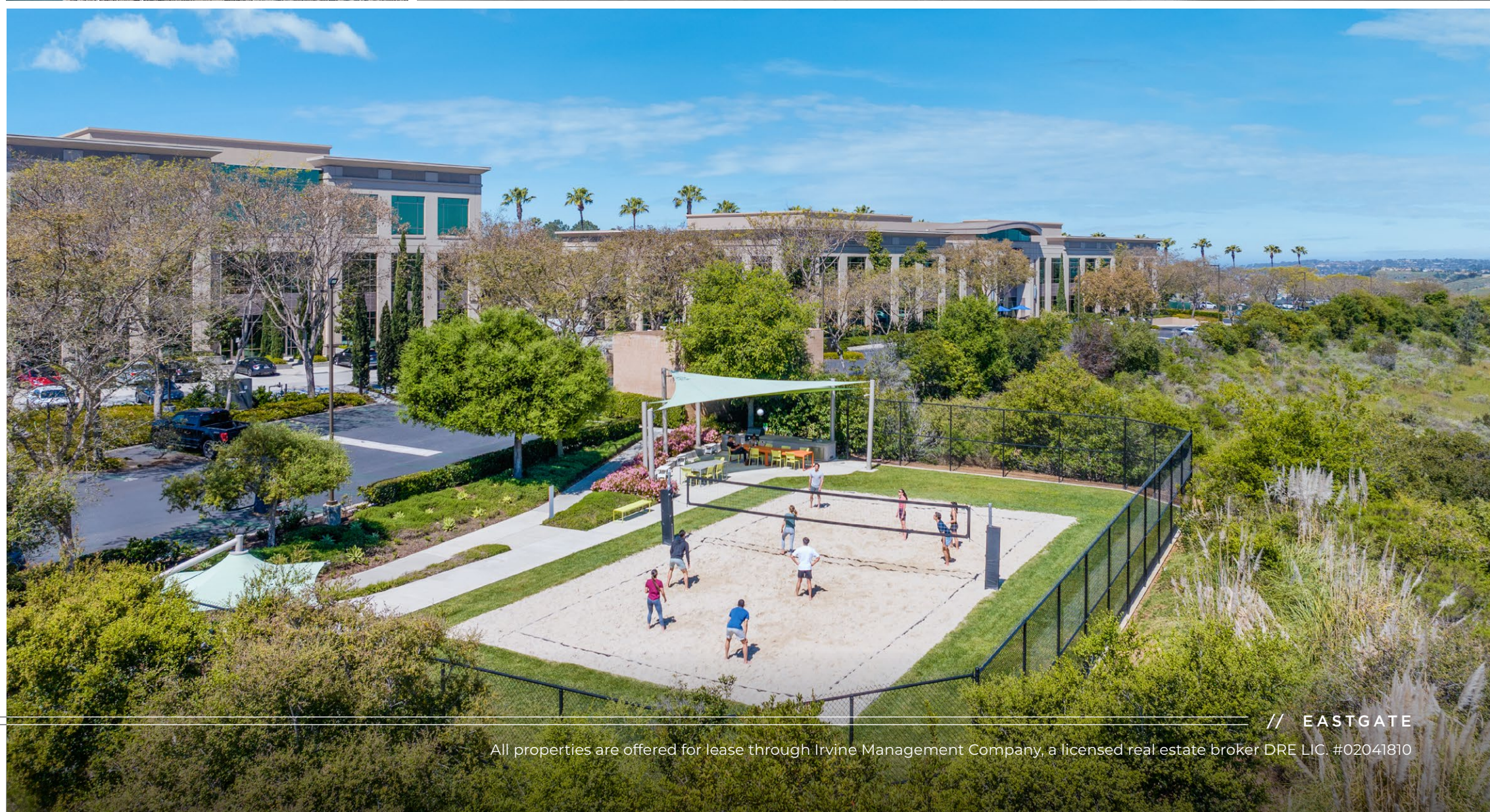
Kinetic Fitness & sports courts



10 Outdoor workspaces

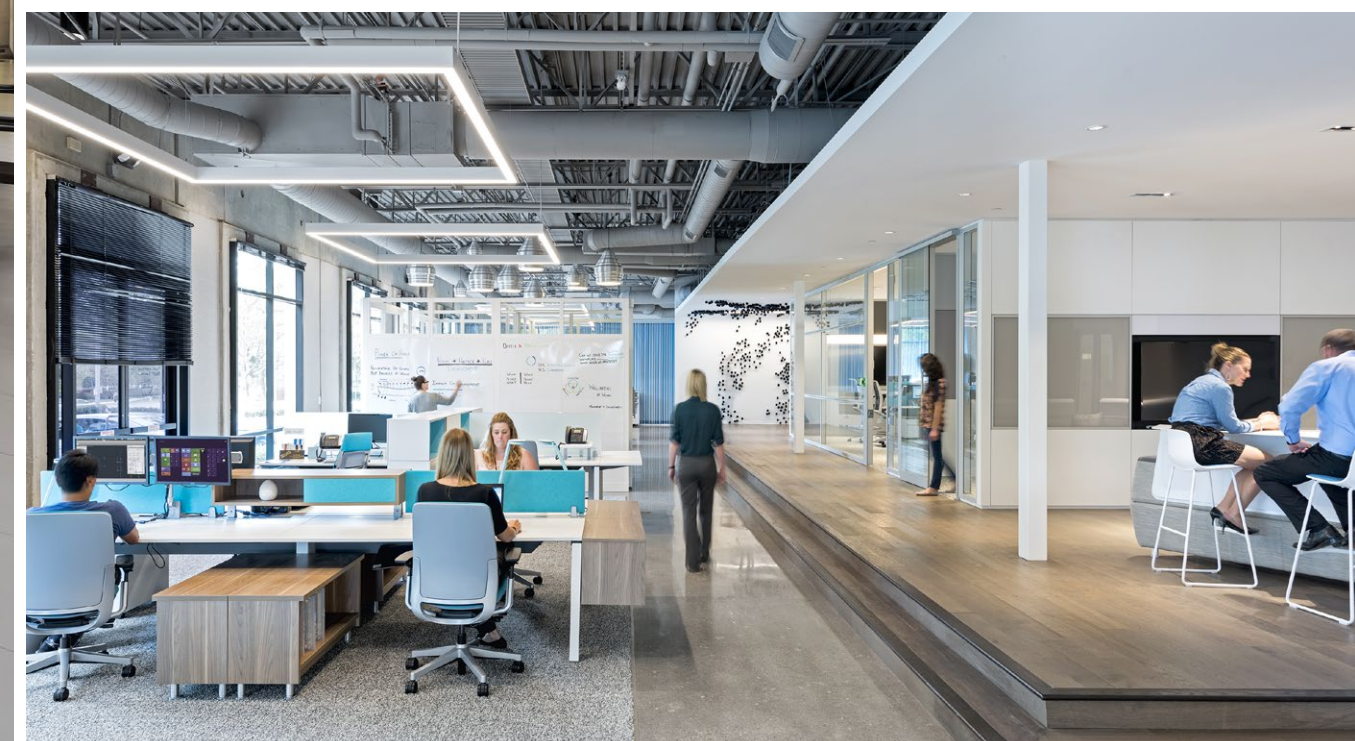


Venue Meetings & Events for up to 32 attendees





CUSTOMER SPACES



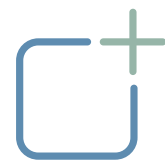
COMPLETE CUSTOMIZATION

Bring your company culture to life with personalized office, R&D and lab space including the opportunity to develop a private, branded campus experience.



OFFICE, EFFORTLESSLY

Take your business further, faster — with a simple path to success. Flex+ delivers premium, move-in ready suites in the best locations for small businesses doing big things.



premium workspace

Build your brand in expertly designed suites with high-end finishes and furniture options.



move-in ready

Save on startup costs with no upfront investment, build-outs or long lead times.

get started at flexplus.com



flexible lease terms

Choose terms that work for you with no long-term commitment and scale across our 130+ workplaces.



personalized support

Make everything easier with simplified leasing and attentive customer care every step of the way.

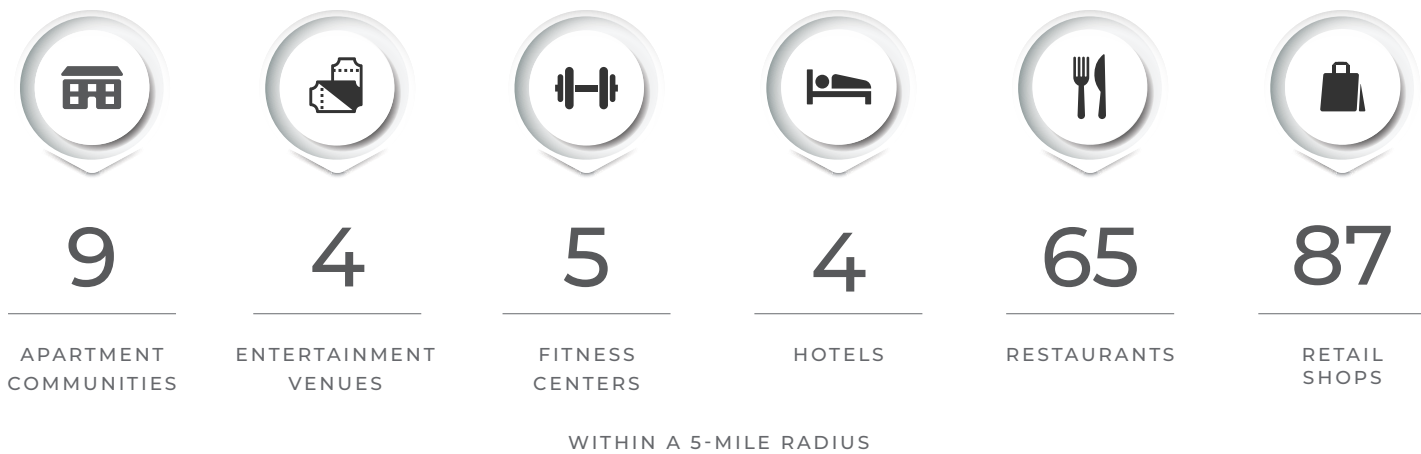




LOCATION

EASTGATE AREA MAP

Eastgate is the premier workplace destination with a range of on-site amenities and conveniences in a central La Jolla UTC location, surrounded by industry-leading companies and offering easy access to freeways, Westfield UTC, and nearby resort-style living.



WE CREATE SPACES THAT BRING PEOPLE TOGETHER TO SUCCEED

More than 18 million people choose to live, work, shop, stay and play in Irvine Company's 129M SF real estate portfolio. Decades of thoughtful planning and stewardship ensure we deliver exceptional placemaking and customer experiences — all backed by our commitment to long-term ownership and industry-leading financial stability.

Industry-leading Financial Stability

Our unmatched capital resources ensure we uphold our standards of excellence, regardless of market conditions.

Future-Proof Flexibility

A range of lease options and our collaborative partnership support your growth.

Elevated Customer Care

Expert teams, fast response times and personalized service ensure worry-free workdays.

Ready for What's Next

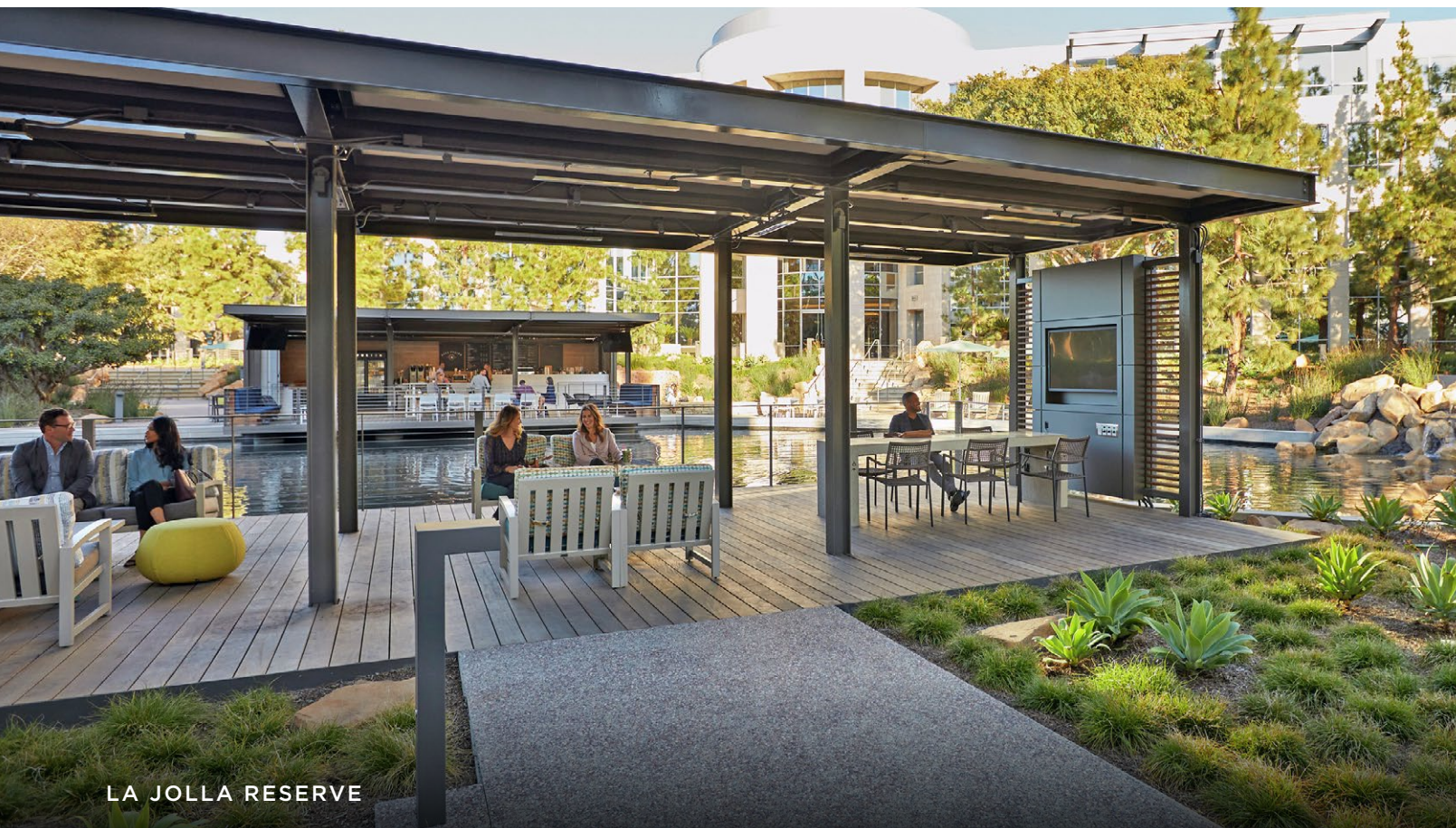
From enabling hybrid solutions to supporting diverse work styles, we keep your business at the forefront of what's possible.

Activated to Attract & Engage Teams

Experience-driven amenities make your workplace an essential employee destination.

Sustainability By Design

We strive to lead and innovate for the preservation of environmental resources.





IRVINECOMPANYOFFICE.COM / 858.658.7700



All properties are offered for lease through Irvine Management Company, a licensed real estate broker DRE LIC.#02041810. ©2026 Irvine Management Company. All rights reserved. All renderings/pictures shown are for information and illustration purposes only and are subject to change. Products, features, and amenities subject to availability. While we believe this information to be reliable, Irvine Management Company makes no representation or warranty as to the accuracy or completeness of such data and it should be independently verified by prospective tenants. You should conduct a careful, independent investigation of the property and verify all information. International WELL Building Institute™ and the related logo are trademarks used with permission from the International WELL Building Institute™. Irvine Company, the Sunwave logo and Flex+ are registered trademarks of Irvine Management Company. Trademarks are the property of their respective owners.