



# 680 N. McCarthy Blvd.

MILPITAS, CA

Suite 240 | ±4,330 SF

 **IRVINE COMPANY** | **CBRE**



# Convenient Milpitas Location

- ±1.1 M SF, 19-building office, R&D and lab campus
- 68-acre campus-style setting
- The Commons: WiFi-enabled, open-air gathering areas with barbecue stations and shaded seating
- Kinetic: private fitness center with state-of-the-art equipment and group classes
- Venue: Three tech-enabled conference rooms with available lounge and kitchenette
- Electric Vehicle charging stations
- Convenient access to Highway 237 and Interstate 880
- McCarthy Ranch Marketplace nearby





# Workplace Amenities

## ON-SITE CONVENIENCES

- The Eatery
- UPS and FedEx Drop Boxes
- EV Charging

## THE COMMONS

- Complimentary WiFi
- Plush Soft Seating
- Bocce Ball Court
- BBQ Stations

## KINETIC

- Private Fitness Center
- Basketball League
- Volleyball Court
- Walking Trails





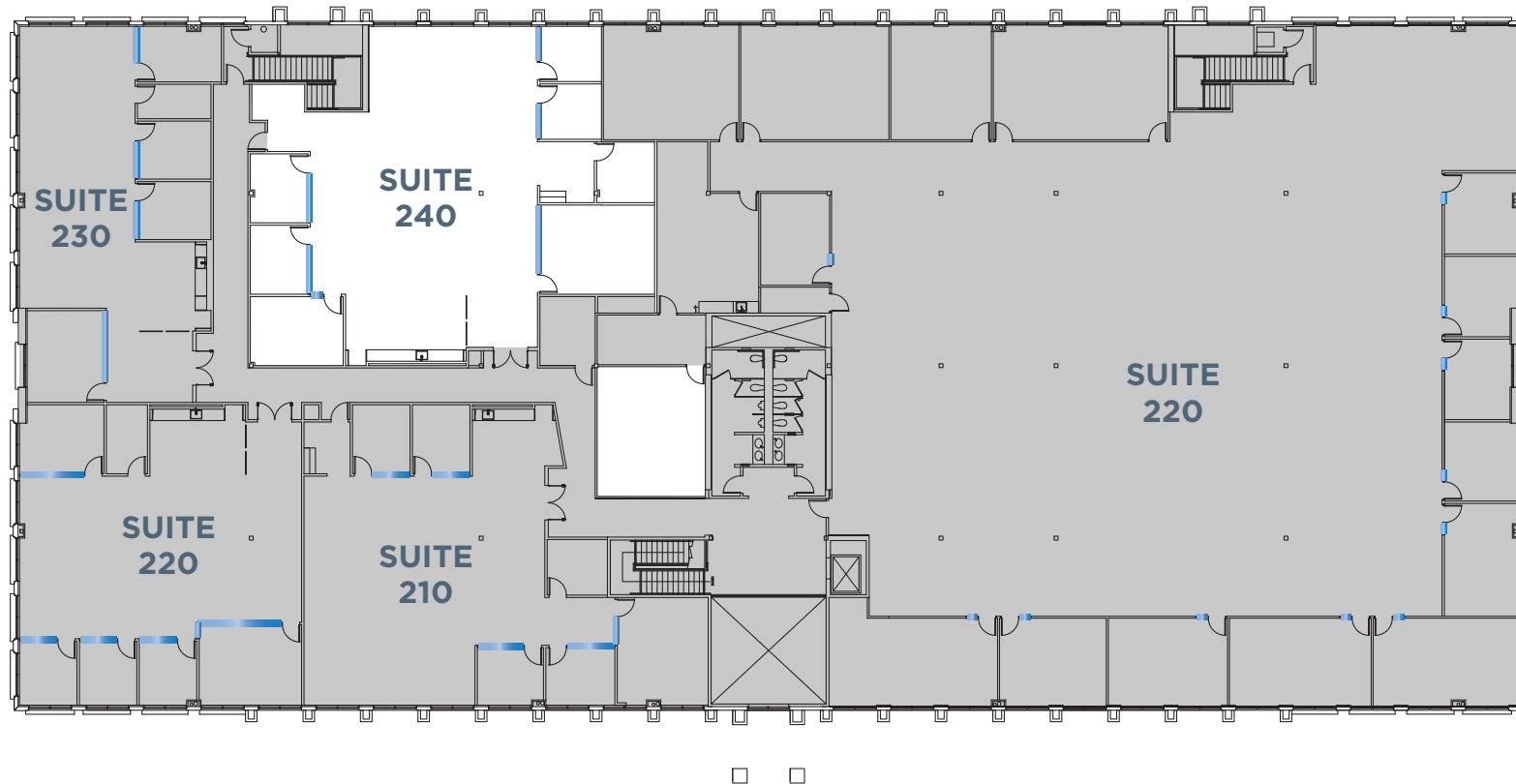
# Interior Photos



# Floor Plan

680 N. MCCARTHY BLVD., SUITE 240

±4,330 SF



- New Market Ready Condition
- Newly Renovated Common Area, Restrooms and Corridors
- Efficient Floor Plans
- Expansive Glassline
- 5 Private Offices
- 1 Meeting Room
- Break Area
- Open Workspace
- Title 24 Compliant LED Lighting
- Furnished at an Additional Cost (\$0.50/sf)



# Local Area

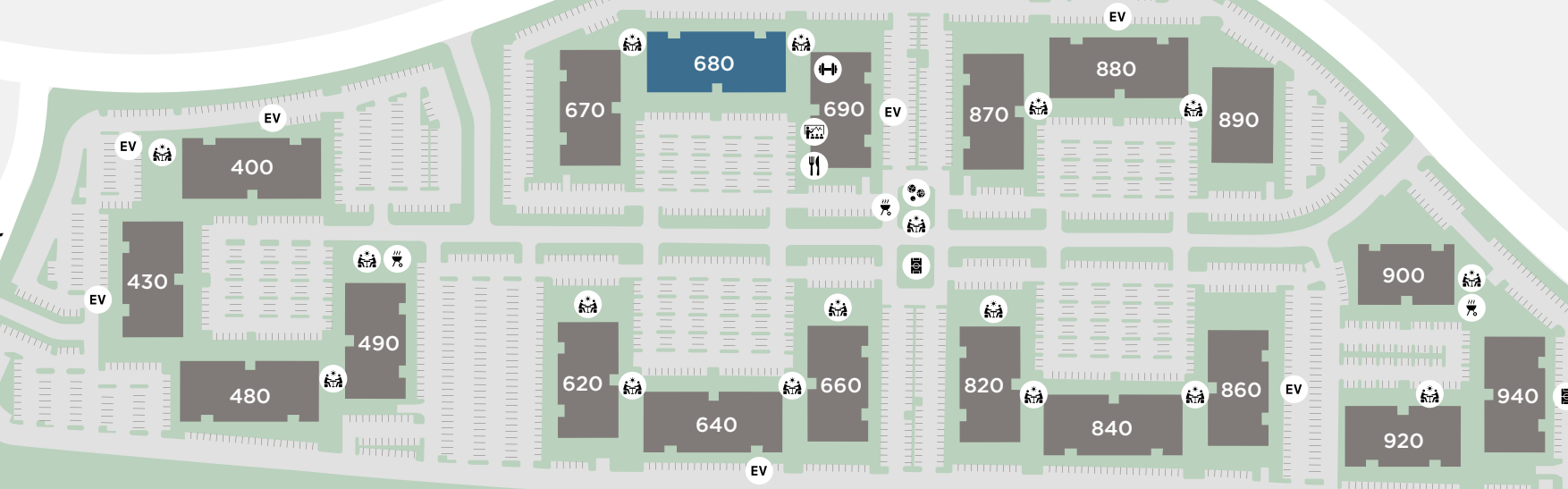
680 N. MCCARTHY BLVD., SUITE 240



McCarthy Ranch Marketplace

RANCH DR

NORTH MCCARTHY BLVD



BBQ



BOCCE  
BALL



THE  
EATERY



EV  
CHARGING



FITNESS  
CENTER



MEETINGS &  
EVENTS



RETAIL



SPORTS  
COURT



OUTDOOR  
WORKSPACE  
(WIFI ENABLED)

## OWNED AND MANAGED BY



**TODD HEDRICK**  
REGIONAL VICE PRESIDENT  
thedrick@irvinecompany.com  
CA LIC. 01152266  
408.330.0126

## FOR LEASING



**CHRISTIAN MARENT**  
EXECUTIVE VICE PRESIDENT  
christian.marent@cbre.com  
CA LIC. 00932744  
408.453.7422

**BEN KNIGHT**  
EXECUTIVE VICE PRESIDENT  
ben.knight@cbre.com  
CA LIC. 01850353  
408.453.7441

**MARK SCHMIDT**  
VICE CHAIRMAN  
will.schmidt@cbre.com  
CA LIC. 00872826  
408.460.5295

©2025 CBRE, Inc. and Irvine Management Company. All rights reserved. This information has been obtained from sources believed reliable, but CBRE and Irvine Management Company make no representation or warranty as to the accuracy or completeness of such data and it should be independently verified by prospective tenants. You should conduct a careful, independent investigation of the property and verify all information. Any reliance on this information is solely at your own risk. All renderings, floor plans, pictures shown are for information and illustration purposes only and are subject to change. Images may not be to scale. May not show final material and finishes. Products, features, and amenities subject to availability. CBRE and the CBRE logo are service marks of CBRE, Inc. All other marks displayed on this document are the property of their respective owners, and the use of such logos does not imply any affiliation with or endorsement of CBRE. Photos herein are the property of their respective owners. Use of these images without the express written consent of the owner is prohibited. The Sunwave and Irvine Company are registered trademarks of Irvine Management Company. All properties are offered for lease through Irvine Management Company, a licensed real estate broker DRE LIC. #02041810.