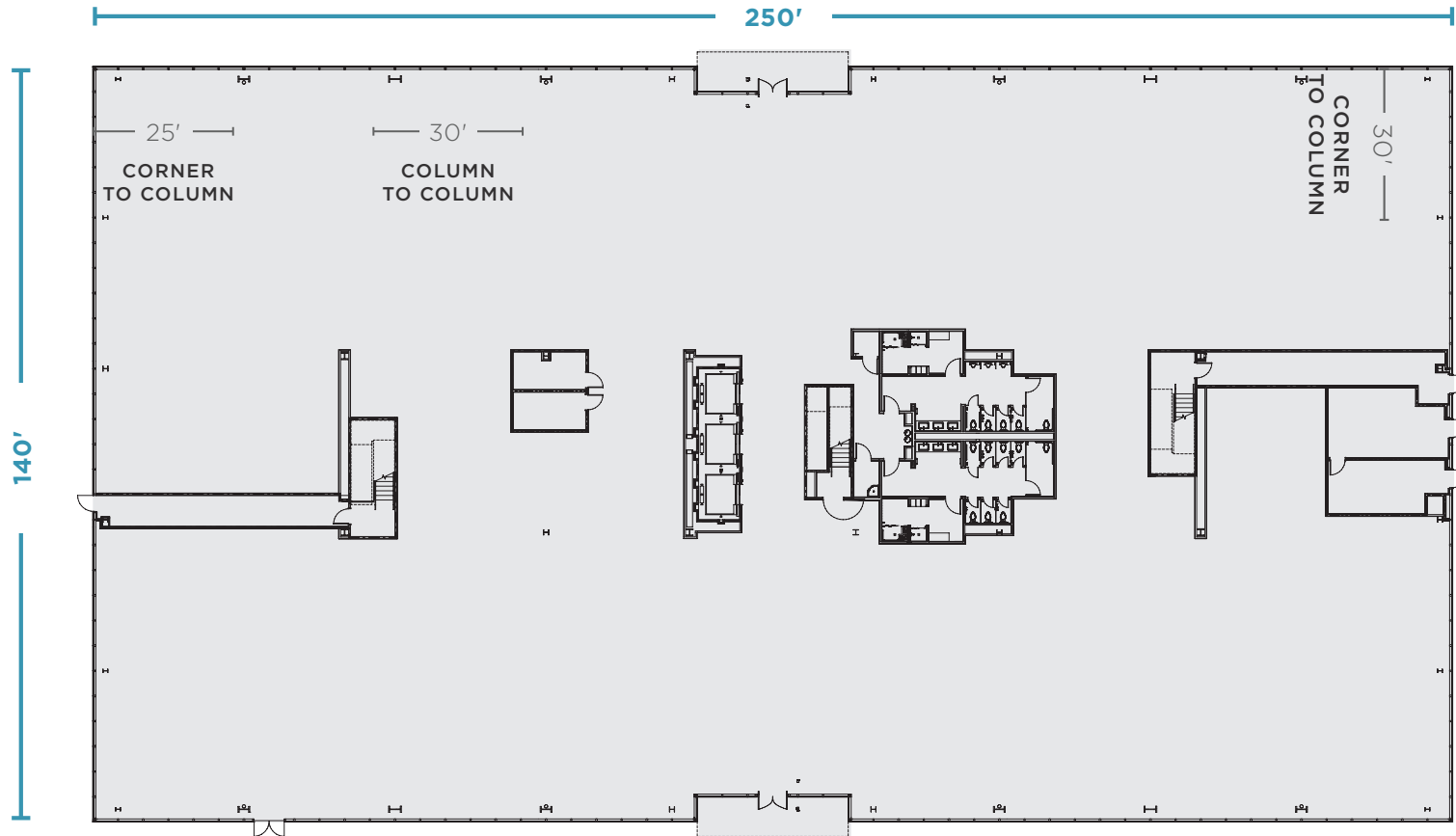


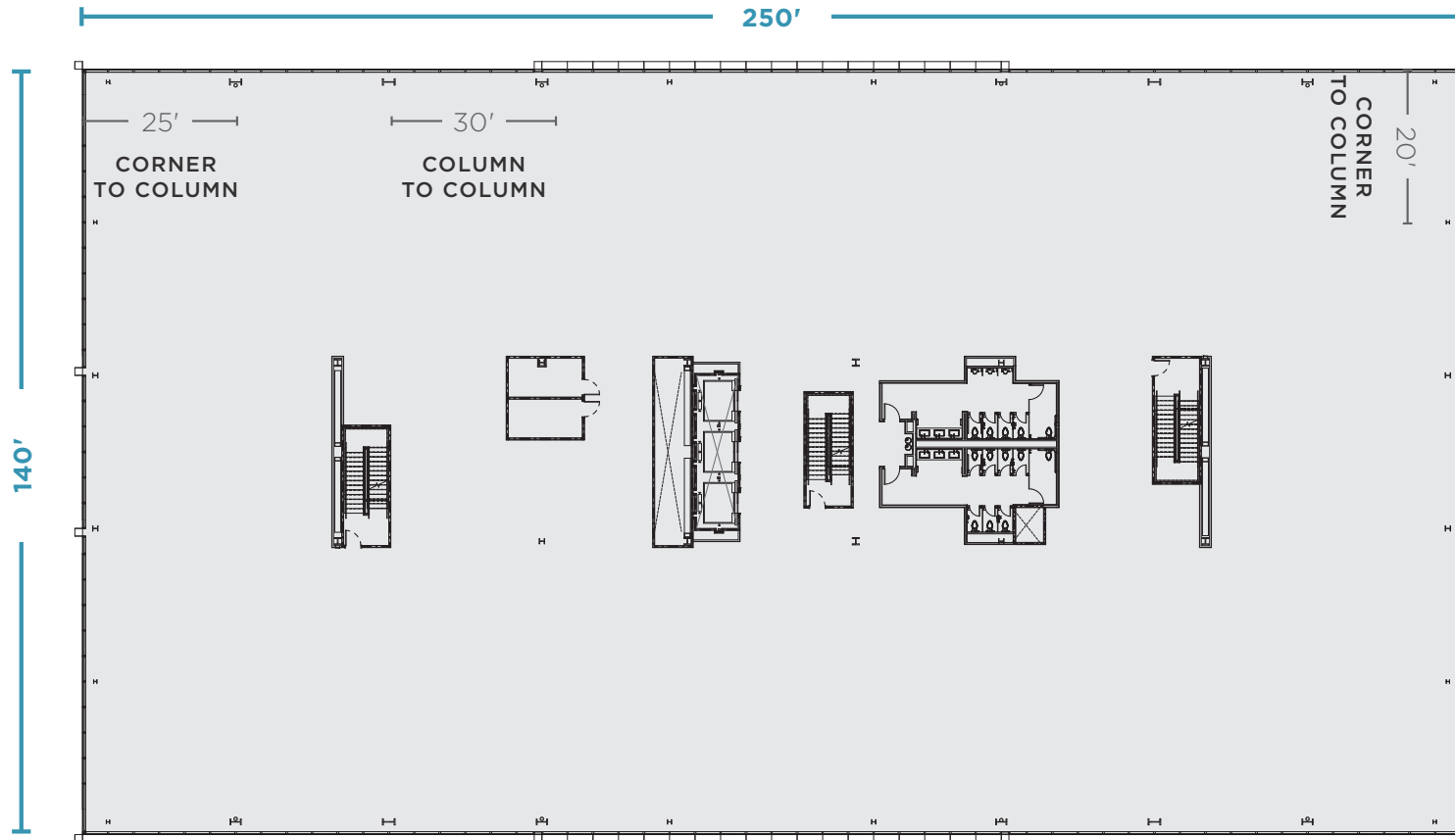
# TYPICAL GROUND FLOOR PLAN

BUILDINGS 4, 5, 6, 11



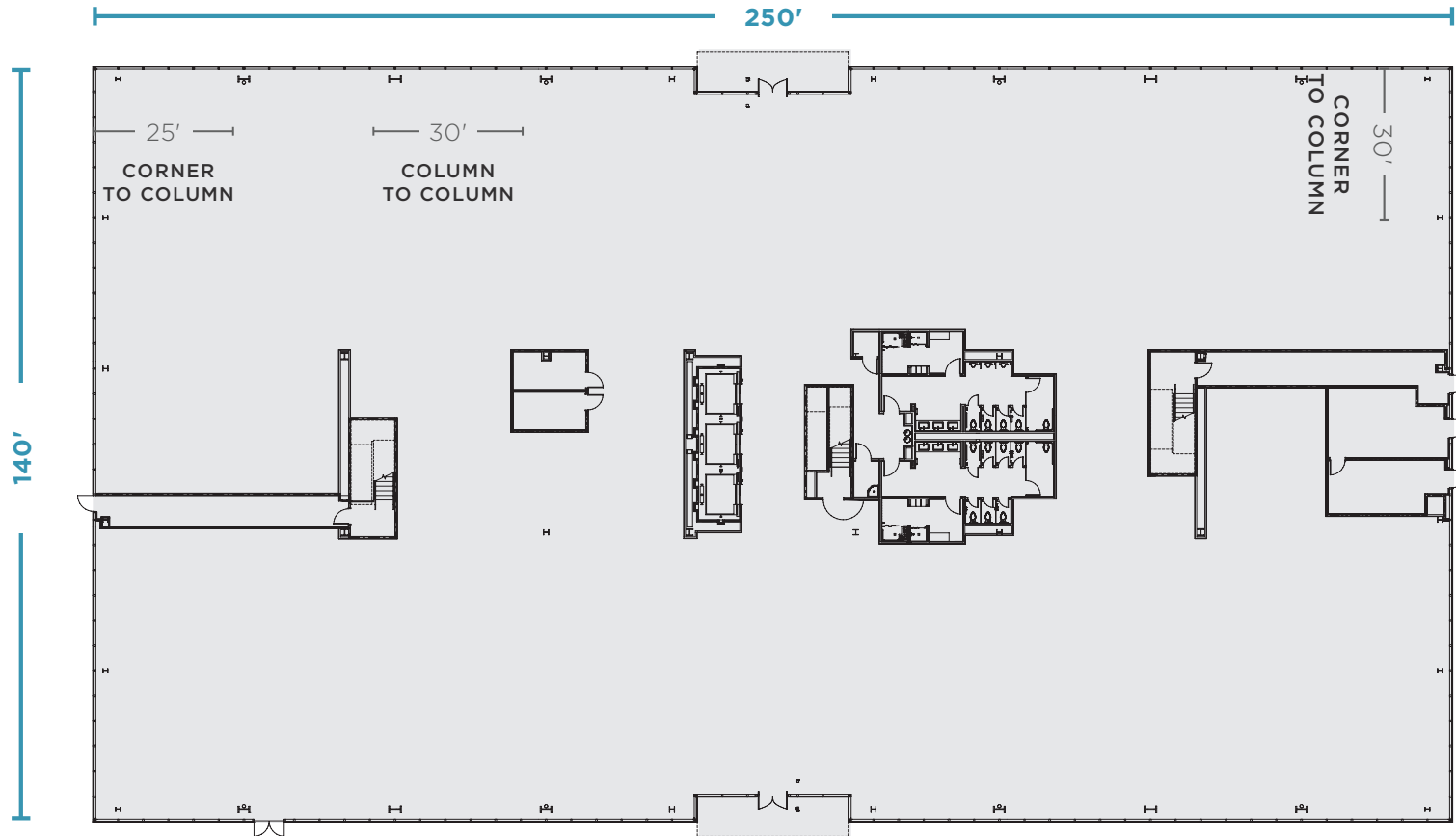
- Generous +/- 35,000 sq. ft. floor plate designed to accommodate scalability and creativity
- 16' slab-to-slab; 12' drop ceiling
- Open column-free interior for progressive, modern space planning
- Extensive use of 11' 4" floor-to-ceiling glass distributes natural light throughout the interior workspace, improving employee well-being and productivity

FOR LEASING INFORMATION CALL **408.330.0100** OR VISIT **PATHLINEPARK.COM**



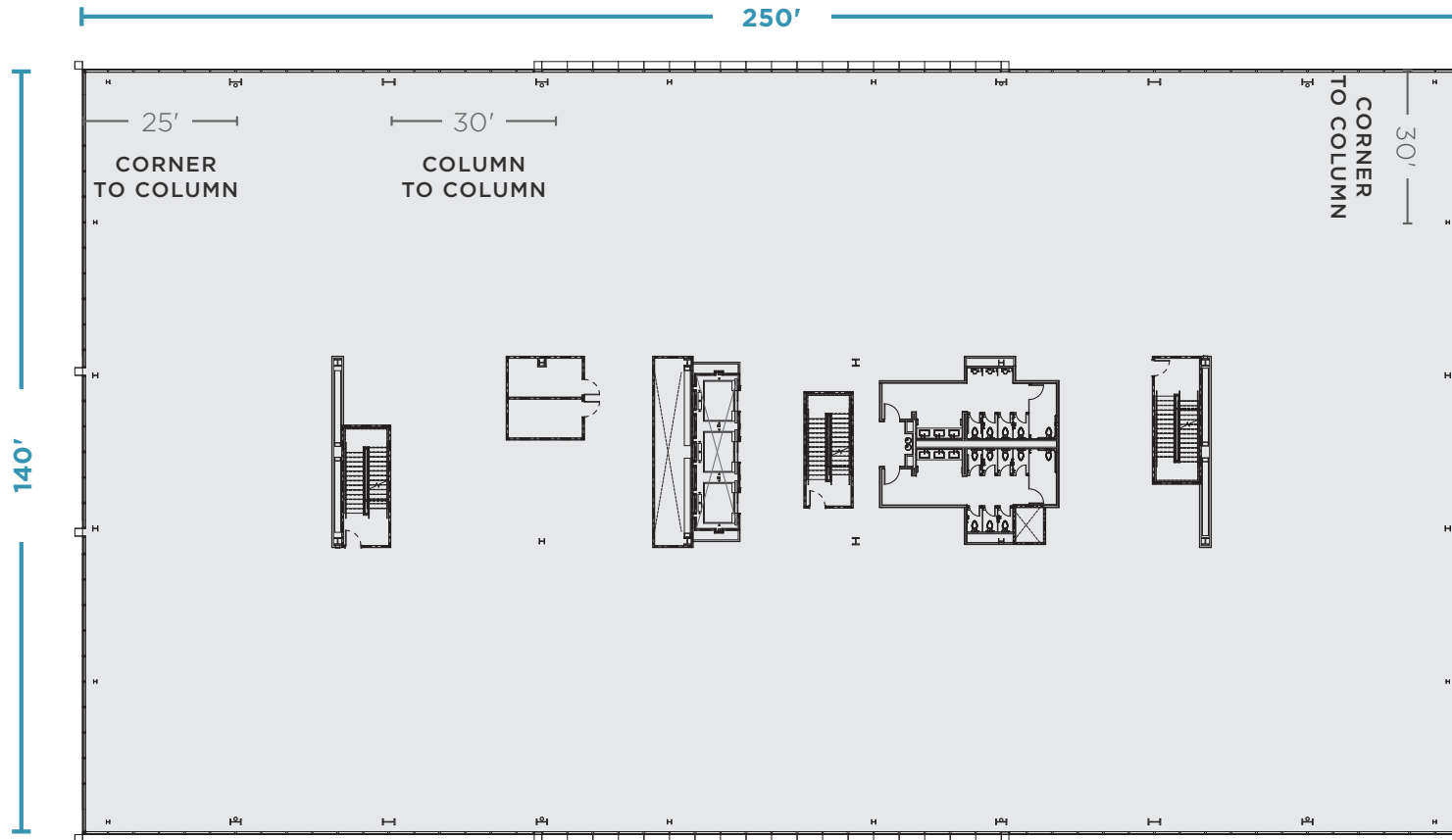
- Generous +/- 35,000 sq. ft. floor plate designed to accommodate scalability and creativity
- 14' 6" slab-to-slab; 10' drop ceiling
- Open column-free interior for progressive, modern space planning
- Extensive use of 10' floor-to-ceiling glass distributes natural light throughout the interior workspace, improving employee well-being and productivity

FOR LEASING INFORMATION CALL **408.330.0100** OR VISIT **PATHLINEPARK.COM**



- Generous +/- 40,000 sq. ft. floor plate designed to accommodate scalability and creativity
- 16' slab-to-slab; 12' drop ceiling
- Open column-free interior for progressive, modern space planning
- Extensive use of 11' 4" floor-to-ceiling glass distributes natural light throughout the interior workspace, improving employee well-being and productivity

FOR LEASING INFORMATION CALL **408.330.0100** OR VISIT **PATHLINEPARK.COM**



- Generous +/- 40,000 sq. ft. floor plate designed to accommodate scalability and creativity
- 14' 6" slab-to-slab; 10' drop ceiling
- Open column-free interior for progressive, modern space planning
- Extensive use of 10' floor-to-ceiling glass distributes natural light throughout the interior workspace, improving employee well-being and productivity

FOR LEASING INFORMATION CALL **408.330.0100** OR VISIT **PATHLINEPARK.COM**